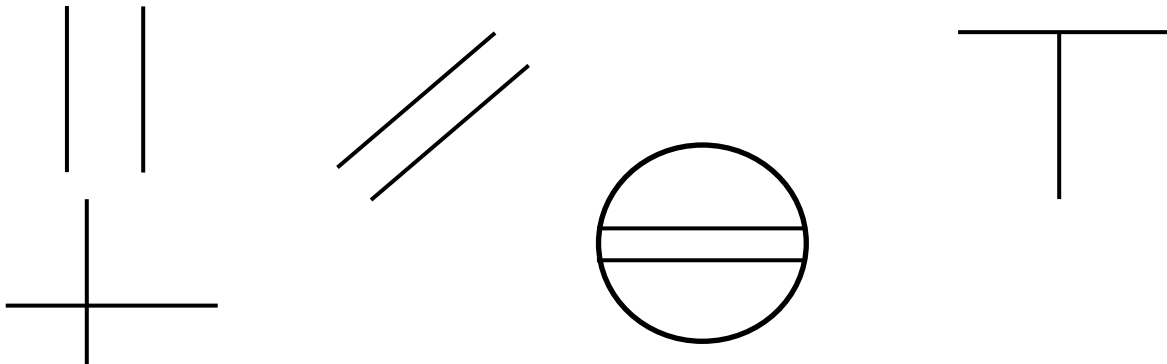




Topic: Lines and Angles

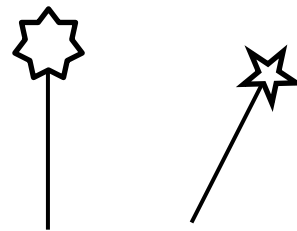
Q1) Circle around the parallel lines and put tick on perpendicular lines:



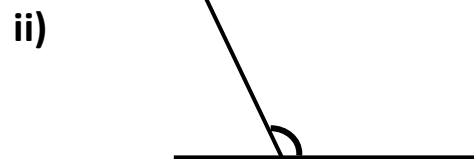
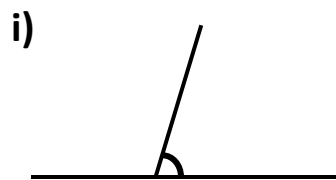
b) Draw another pin that is:

i) parallel to it

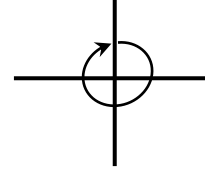
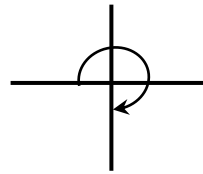
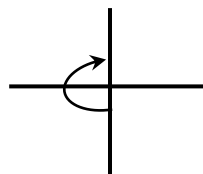
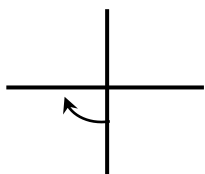
ii) perpendicular to it



Q2: Measure the marked angles by protector and identify if they are acute, obtuse and right angle.



b) Look at the turn and write the size of angle formed.



Q3: Draw the following angles with the help of protector.

i) 35°

ii) 150°

iii) 175°